



Transparency Document

| | |
|----------------------------------|--|
| Reviewed and approved by: | Joanne Cook (Governance Manager) |
| Updated by: | Emma Billingham (Governance Support Officer) |
| Next formal review: | September 2024 |

Version control

| Version | Date | Description | Revision author |
|---------|----------|---------------------------------|--|
| V.1 | 07.06.23 | Shireland CBSO Academy included | E Billingham (Governance Support Officer) |
| V.2 | 01.04.24 | Newfield Park Primary Academy | E Billingham (Governance Support Officer) |
| | | | |
| | | | |
| | | | |
| | | | |
| | | | |



Shireland Collegiate Academy Trust Transparency

Shireland Collegiate Academy Trust
Shireland Collegiate Academy
Thorns Collegiate Academy
Holyhead Primary Academy
Tameside Primary Academy
West Bromwich Collegiate Academy
Shireland Technology Primary
Wallbrook Primary Academy
Lightwoods Primary Academy
Shireland Biomedical UTC
Shireland CBSO Academy
Newfield Park Primary Academy

Shireland Learning Limited

2023-24

This document contains details of the Shireland Learning Limited Board, Shireland Collegiate Academy Trust Board and each Academy within the Trust from September 2023

There is a separate document for Governance prior to September 2023 which records details of Trustees and Governors in the academic year 2022-2023.

Shireland Collegiate Academy Trust

Shireland Collegiate Academy

Waterloo Road

Smethwick

West Midlands

B66 4ND

UPIN – 135143

UKPRN – 10058221

Company Number – 06336693

Subsidiary Trading Company - Shireland Learning Limited Company Number – 06052021

Company Secretary – Mrs Jane Kellas

Contents

| | |
|--|----|
| Introduction | 5 |
| Shireland Collegiate Academy Trust's Structure | 6 |
| Members | 7 |
| Register of people with Significant Control (PSC) | 7 |
| Shireland Collegiate Academy Trustees and Appointment Dates | 8 |
| Shireland Collegiate Academy Trust's Executive Leadership Team | 10 |
| Shireland Collegiate Academy Trust - Resources | 11 |
| Shireland Collegiate Academy Trust – Audit & Risk | 11 |
| Academies within the Trust | 12 |
| Shireland Collegiate Academy | 13 |
| Thorns Collegiate Academy | 13 |
| West Bromwich Collegiate Academy | 14 |
| Shireland Biomedical UTC | 14 |
| Shireland CBSO Academy | 15 |
| Holyhead Primary Academy | 16 |
| Tameside Primary Academy | 16 |
| Shireland Technology Primary | 17 |
| Wallbrook Primary Academy | 17 |
| Lightwoods Primary Academy | 18 |
| Newfield Park Primary Academy | 18 |
| Link Trustees & Governors | 19 |
| Declarations of Pecuniary Interests | 21 |
| Gift and Hospitality Declarations | 33 |
| Meeting Attendance | 38 |
| Shireland Learning Limited (SLL) | 46 |
| Introduction | 46 |
| Register of People with Significant Control | 46 |
| Shireland Learning Limited Board | 47 |
| Purpose | 47 |
| Directors of Shireland Learning Limited | 48 |
| Declarations of Pecuniary Interests | 49 |
| Gifts and Hospitality Declarations | 50 |
| Meeting Attendance | 51 |
| Shireland Learning Limited | 51 |

Introduction

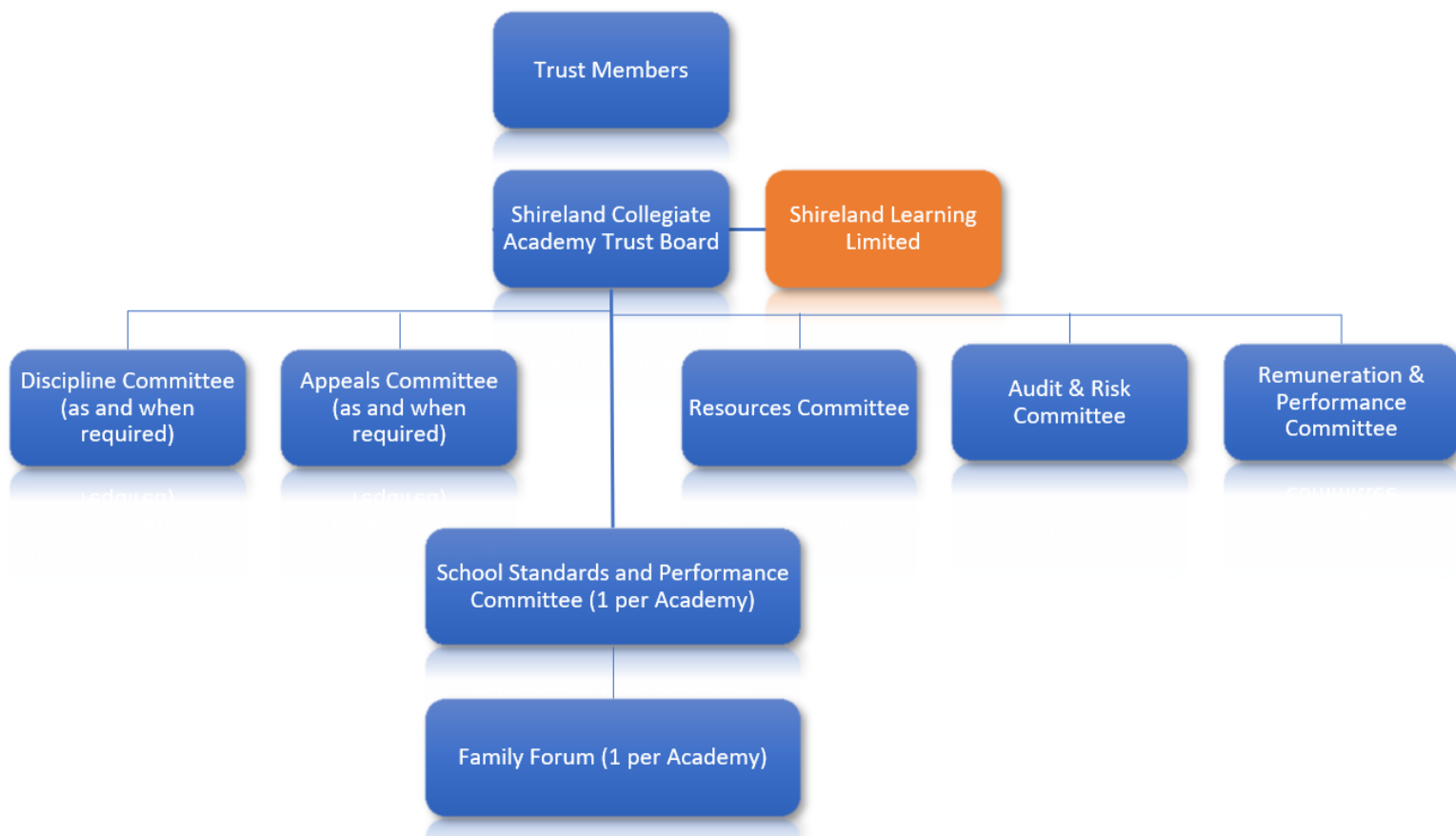
This document details information required to be publicly published in order to comply with the Academies Trust Handbook 2021. The Academies Trust Handbook 2021 states:

- 2.49 The trust must be transparent with its governance arrangements.
- 2.50 The trust must provide details of its governance arrangements in the governance statement published with its annual accounts, including what the board has delegated to committees and, in trusts with multiple academies, to local governing bodies. The trust must also publish on its website up-to-date details of its governance arrangements in a readily accessible format, including:
 - *the structure and remit of the trust's members, board of trustees, committees and local governing bodies (the trust's scheme of delegation for governance functions), and the full names of the chair of each*
 - *for each of the trust's members serving at any point over the past 12 months, their full names, date of appointment, date they stepped down (where applicable), and relevant business and pecuniary interests including governance roles in other educational institutions*
 - *for each trustee and local governor serving at any point over the past 12 months, their full names, date of appointment, term of office, date they stepped down (where applicable), who appointed them, and relevant business and pecuniary interests including governance roles in other educational institutions. 32 If the accounting officer is not a trustee their business and pecuniary interests must still be published*
 - *for each trustee, their attendance records at board and committee meetings over the last academic year*
 - *for each local governor, their attendance records at local governing body meetings over the last academic year*

(Taken from the [Academies Trust Handbook 2021](#))

The Governance Structure and the Scheme of Delegation are also published on the [Trust website](#).

Shireland Collegiate Academy Trust's Structure



Please note:

- *The Governance Structure for Shireland Learning Limited can be found within this document.*
- *The Standards and Performance Committee (SPC) was formerly known as the Local Governing Body (LGB) until the revised governance structure for the Shireland Collegiate Academy Trust was approved on the 11th October 2016.*

Members

The following table shows the Members for Shireland Collegiate Academy Trust.

| Name | Position | Nationality | Country | Service Address | Date appointed | Resignation date |
|---------------------------|----------|-------------|---------|------------------------------------|----------------|------------------|
| Zahur Akhtar | Member | British | England | Shireland Collegiate Academy Trust | 12-07-16 | |
| | | | | | | |
| Jithesh Nair | Member | British | England | Shireland Collegiate Academy Trust | 03-08-16 | 04-09-23 |
| | | | | | | |
| Balbir Sandhu | Member | British | England | Shireland Collegiate Academy Trust | 25-11-19 | |
| | | | | | | |
| Kiran Egan | Member | British | England | Shireland Collegiate Academy Trust | 27-03-23 | |
| | | | | | | |
| Ashley Savell-Boss | Member | British | England | Shireland Collegiate Academy Trust | 01-09-23 | |
| | | | | | | |
| Ian Foyle | Member | British | England | Shireland Collegiate Academy Trust | 01-09-23 | |

Register of people with Significant Control (PSC)

In accordance with Government legislation, as an Academy, we are required to declare a register of people with significant control to Companies House annually or upon any alterations. The register below shows all of the information that is required to be publicised. According to the guidance, 'A company is required to take reasonable steps to contact its PSCs and confirm the information for the register. If someone refuses to provide the information, they will commit a criminal offence. A company may also approach people who it believes have knowledge of who its PSCs are. Failure to comply is also a criminal offence.'

https://www.gov.uk/government/uploads/system/uploads/attachment_data/file/496738/PSC_register_summary_guidance.pdf

Shireland Collegiate Academy Trust keeps an internal register of PSC as required by national guidance.

Shireland Collegiate Academy Trustees and Appointment Dates

All Trustee appointments are approved by the Trust Board for a term of office which is 4 years

| Name | Role | Member of | Appointed by | Appointment Date | Re-appointment Date | Resignation Date |
|-----------------------------|--------------------|--|--------------------------|----------------------------------|---------------------------------|------------------|
| Sir Mark Grundy | Ex-Officio Trustee | | Appointed by Members | 7 th August 2007 | N/A | |
| Andrew Dennis | Trustee | Chair of Trust Board Resources Committee (Vice Chair) | Appointed by Trust Board | 25 th September 2023* | 24 th September 2027 | |
| Michael Conway Jones | Trustee | Trust Board Resources Committee Audit & Risk Committee Chair of SCA SPC | Appointed by Trust Board | 12 th July 2020* | 11 th July 2024 | |
| Judith Hunt | Trustee | Trust Board Resources Committee Audit & Risk Committee (Chair) Chair of TPA SPC | Appointed by Trust Board | 21 st May 2020 | 20 th May 2024 | |
| Julie McLeod | Trustee | Trust Board Audit & Risk Committee | Appointed by Members | 31 st March 2023 | 30 th March 2027 | |
| Jithesh Nair | Trustee | Trust Board (Vice Chair) Resources Committee (Chair) Audit & Risk Committee (Vice Chair) Chair of STP SPC | Appointed by Members | 18 th July 2022* | 17 th July 2026 | |
| Emma Stenning | Trustee | Trust Board | Appointed by Members | 1 st September 2023 | 31 st August 2027 | |
| Robert Till | Trustee | Trust Board Chair of RPMC Chair of SBU SPC | Appointed by Members | 30 th November 2021 | 29 th November 2025 | |

| | | | | | | |
|----------------|--|--|--|--|--|--|
| Vacancy | | | | | | |
|----------------|--|--|--|--|--|--|

** This refers to the re-appointment date of a Trustee who has previously served one or more consecutive period of office*

Shireland Collegiate Academy Trust's Executive Leadership Team

| Name | Role |
|--------------------|---|
| Sir Mark Grundy | Chief Executive Officer (CEO) |
| David Irish | Deputy CEO & Inclusion Lead (Resigned 22 nd December 2023) |
| George Faux | Director of Secondary Education |
| Lady Kirsty Grundy | Director of Primary Education |
| Moira Green | Director of Professional Development (Appointed 6 th November 2023) |
| Jodie Taylor | Chief Finance Officer |
| Aled Ballard | Chief Operating Officer |
| Hasnain Panjwani | Chief Strategy Officer |
| Melanie Adams | HR Director |
| Kris Griffin | Marketing and Communications Director |
| Jane Kellas | Company Secretary |

Shireland Collegiate Academy Trust - Resources

Appointment

| Name | Position | Appointment to Committee | Resignation from Committee |
|----------------------|----------------------|--------------------------------|----------------------------|
| Jithesh Nair | Trustee and Chair | 27 th November 2018 | |
| Sir Mark Grundy | Ex-Officio Trustee | 27 th November 2018 | |
| Andy Dennis | Chair of Trust Board | 12 th November 2019 | |
| Michael Conway-Jones | Trustee | 27 th November 2018 | |
| Judith Hunt | Trustee | 12 th November 2019 | |
| Stella Fox | Chair of WPA's SPC | 24 th January 2024 | |
| Martin O'Hanlon | Chair of TCA's SPC | 12 th November 2019 | |
| Karen Kingham | Associate Governor | 5 th February 2024 | |

Shireland Collegiate Academy Trust – Audit & Risk

Appointment

| Name | Position | Appointment to Committee | Resignation from Committee |
|----------------------|-------------------|-------------------------------|----------------------------|
| Judith Hunt | Trustee and Chair | 14 th July 2020 | |
| Jithesh Nair | Trustee | 7 th July 2019 | |
| Michael Conway-Jones | Trustee | 7 th July 2019 | |
| Julie McLeod | Trustee | 7 th December 2023 | |
| Liam McGrath | Governor At SBU | 14 th March 2024 | |

Academies within the Trust

| Academy | Academy URN | Commencement Date |
|--|-------------|--------------------------------|
| Shireland Collegiate Academy (SCA) | 135170 | 1 st September 2007 |
| Thorns Collegiate Academy (TCA) | 143818 | 1 st September 2017 |
| Holyhead Primary Academy (HPA) | 144630 | 1 st September 2017 |
| Tameside Primary Academy (TPA) | 146358 | 1 st October 2018 |
| West Bromwich Collegiate Academy (WBCA) | 147182 | 1 st September 2019 |
| Shireland Technology Primary School (STP) | 147191 | 1 st September 2019 |
| Wallbrook Primary Academy (WPA) | 147721 | 1 st January 2021 |
| Lightwoods Primary Academy (LPA) | 148333 | 1 st June 2021 |
| Shireland Biomedical UTC (SBU) | 141813 | 1 st April 2022 |
| Shireland CBSO Academy (SCBSO) | 149827 | 1 st September 2023 |
| Newfield Park Primary Academy (NPPA) | 150555 | 1 st April 2024 |

Appointment

All appointments are approved by the Trust Board for a term of office which is 4 years.

| Name | Position | Appointment Date | Resignation Date |
|------------------------|---------------------------|---------------------------------|---------------------------------|
| Moira Green | Principal | 6 th November 2023 | |
| Dave Irish | Principal | 1 st September 2016 | 5 th November 2023 |
| Michael Conway Jones | Chair (Trustee) | 11 th July 2020* | |
| Zephaniah Chukwudum | Community | 26 th October 2021 | 29 th September 2023 |
| Taher Mulla | Community | 11 th February 2021 | |
| Emma Scott | Community (Vice Chair) | 10 th June 2019 | |
| Jessica Holloway-Dyker | Community | 29 th September 2023 | |
| Gareth Brown | Co-opted | 10 th June 2019 | |
| Zahur Akhtar | Family | 9 th March 2021 | |
| Muneerah Dubidat | Family | 28 th September 2023 | |
| Liam Fletcher | Staff | 15 th June 2021 | 29 th November 2023 |
| Lucy Prince | Staff Governor | 9 th February 2024 | |

Thorns Collegiate Academy

Appointment

All appointments are approved by the Trust Board for a term of office which is 4 years.

| Name | Position | Appointment Date | Resignation Date |
|-----------------------|--------------------|---------------------------------|--------------------------------|
| Manny Kelay | Principal | 1 st September 2017 | 23 rd November 2023 |
| Nicky Jones | Acting Principal | 24 th November 2023 | |
| Martin O'Hanlon | Chair and Co-opted | 3 rd July 2023* | |
| Shona Jenner-Whatford | Community | 12 th January 2023 | 21 st December 2023 |
| Chris Williams | Community | 23 rd March 2023 | |
| Matthew Snell | Community | 13 th September 2023 | |
| Vacancy | Community | | |
| Qahir Damani | Co-opted | 12 th October 2023 | |
| Anthony Farrell | Family | 13 th November 2023 | |
| Sadia Riaz | Family | 4 th July 2023 | |
| Tom Pell | Staff | 1 st September 2021 | |

Appointment

All appointments are approved by the Trust Board for a term of office which is 4 years.

| Name | Position | Appointment Date | Resignation Date |
|--------------------|---------------------------|---------------------------------|-------------------------------|
| George Faux | Principal | 1 st September 2019 | |
| Elisabeth Johnson | Chair & Family | 12 th September 2022 | |
| Claire Churchill | Community | 28 th April 2021 | |
| Sohail Hussain | Community (Vice Chair) | 11 th October 2023* | |
| Abayomi Bogle | Community | 24 th October 2023* | |
| Henry Cofie-Squire | Co-opted | 30 th April 2021 | |
| Haleema Yousaf | Co-opted | 31 st March 2023 | |
| Sandeep Basra | Family | 21 st November 2019 | 26 th October 2023 |
| Abdul Khan | Family | 20 th December 2023 | |
| Janine Parkes | Staff | 3 rd April 2023 | |



Shireland Biomedical UTC

Appointment

All appointments are approved by the Trust Board for a term of office which is 4 years.

| Name | Position | Appointment Date | Resignation Date |
|------------------|----------------------------------|--------------------------------|------------------|
| Robert Till | Chair (Trustee) | 30 th November 2021 | |
| Stephen McMullan | Employer Sponsor | 1 st April 2022 | |
| Monique Hyllam | Employer Sponsor (Vice Chair) | 1 st April 2022 | |
| Liam McGrath | University Sponsor | 8 th March 2023 | |
| Julie Hadley | University Sponsor | 13 th March 2023 | |
| Donna Lewis | University Sponsor | 8 th November 2023 | |
| Siqua Rashid | Family | 8 th December 2022 | |
| Lorraine Newton | Family | 4 th March 2023 | |
| Gill Aspley | Staff Governor | 5 th February 2024 | |

Appointment

All appointments are approved by the Trust Board for a term of office which is 4 years.

| Name | Position | Appointment Date | Resignation Date |
|-------------------|---------------------------|---------------------------------|----------------------------|
| David Green | Principal | 1 st September 2023 | |
| Tom Spurgin | Chair & Co-opted | 1 st September 2023 | |
| Catherine Arlidge | Community | 1 st September 2023 | |
| Carla Amos | Community (Vice Chair) | 1 st September 2023 | |
| Lisa Hill | Community | 30 th October 2023 | |
| Indi Deol | Co-opted | 9 th October 2023 | |
| Sarah Knott | Family | 20 th October 2023 | |
| Amrit Sohal | Family | 20 th October 2023 | |
| Katie Thomas | Staff | 29 th September 2023 | 7 th April 2024 |

Appointment

All appointments are approved by the Trust Board for a term of office which is 4 years.

| Name | Position | Appointment Date | Resignation Date |
|-------------------|-------------------|---------------------------------|--------------------------------|
| Natalie Shipley | Principal | 1 st September 2022 | |
| Adam Orton | Chair Co-opted | 21 st September 2022 | 3 rd September 2023 |
| Ashleigh Orton | Community | 21 st September 2022 | 3 rd September 2023 |
| Christopher Jones | Chair & Community | 5 th June 2023 | |
| Faye Adams | Community | 22 nd June 2023 | |
| James Hendy | Community | 29 th June 2023 | |
| Alison Barlow | Co-Opted | 18 th October 2023 | |
| Arron Samra | Co-Opted | 4 th September 2023 | |
| Rebecca Burkitt | Family | 5 th June 2023 | |
| Laura Bracey | Family | 14 th October 2022 | |
| Kirsty Cole | Staff | 7 th October 2022 | |

Tameside Primary Academy

Appointment

All appointments are approved by the Trust Board for a term of office which is 4 years.

| Name | Position | Appointment Date | Resignation Date |
|-----------------|-----------------------|--------------------------------|--------------------------------|
| Mitchell Hill | Principal | 1 st September 2019 | |
| Judith Hunt | Chair (Trustee) | 17 th July 2019 | |
| Simeon Douglas | Community | 28 th April 2022 | 19 th February 2024 |
| Satvinder Kaur | Community | 25 th May 2023 | 26 th October 2024 |
| Vacancy | Community | | |
| Vacancy | Community | | |
| Gary Smith | Community | 27 th October 2023 | |
| Harjeet Parwana | Co-opted (Vice Chair) | 29 th April 2022 | |
| Amie Chatwin | Family | 27 th October 2023 | |
| Vacancy | Family | | |
| Emily Heeley | Staff | 7 th March 2022 | |

Shireland Technology Primary

Appointment

All appointments are approved by the Trust Board for a term of office which is 4 years.

| Name | Position | Appointment Date | Resignation Date |
|--------------------|------------------------|---------------------------------|-----------------------------|
| Lady Kirsty Grundy | Principal | 1 st September 2019 | |
| Jitesh Nair | Chair (Trustee) | 30 th April 2019 | |
| Andrea Du Plooy | Community | 25 th November 2020 | |
| Samreena Kamran | Community | 25 th November 2020 | |
| Katie Lucas | Community | 9 th October 2023* | |
| Andrea Bell | Co-opted | 10 th October 2023* | 21 st March 2024 |
| Liam Fletcher | Co-opted | 22 nd March 2024 | |
| Marie Hartland | Family | 9 th October 2023* | |
| Vinod Mallampati | Family (Vice Chair) | 11 th October 2023* | |
| Pavendeep Matharu | Staff | 26 th September 2022 | |

Wallbrook Primary Academy

Appointment

All appointments are approved by the Trust Board for a term of office which is 4 years.

| Name | Position | Appointment Date | Resignation Date |
|--------------------|---------------------------|---------------------------------|------------------|
| Lorna McGregor | Principal | 1 st September 2021 | |
| Stella Fox | Chair & Family | 1 st January 2021 | |
| Len Hazlehurst | Community (Vice Chair) | 1 st January 2021 | |
| Abdul Samee Wahidi | Community | 24 th January 2023 | |
| Leigh New | Community | 21 st September 2023 | |
| Charlotte Taylor | Co-opted | 29 th April 2022 | |
| Vacancy | Co-opted | | |
| Matthew Hammond | Family | 13 th September 2022 | |
| Sana Rashid | Staff | 21 st June 2023 | |

Appointment

All appointments are approved by the Trust Board for a term of office which is 4 years.

| Name | Position | Appointment Date | Resignation Date |
|--------------------|------------------|---------------------------------|------------------|
| Robert Matthews | Principal | 1 st June 2021 | |
| Elizabeth Warwick | Family and Chair | 9 th September 2021 | |
| Neil Robertson | Community | 31 st January 2022 | |
| Kerry Forward | Community | 22 nd September 2022 | |
| Jennifer Okoeguale | Community | 31 st March 2023 | |
| Amy Danks | Co-opted | 15 th September 2021 | |
| Diana Dordea | Co-opted | 22 nd March 2024 | |
| Rajeev Bahl | Family | 8 th October 2021 | |
| Lisa Lines | Staff | 13 th February 2023 | |

Newfield Park Primary Academy

Appointment

All appointments are approved by the Trust Board for a term of office which is 4 years.

| Name | Position | Appointment Date | Resignation Date |
|--------------------|---------------------|----------------------------|------------------|
| Stephen Payne | Principal | 1 st April 2024 | |
| John Stone | Community and Chair | 1 st April 2024 | |
| Vacancy | Community | | |
| Vacancy | Community | | |
| Chris Christoforou | Co-opted | 1 st April 2024 | |
| Kate Sharratt | Co-opted | 1 st April 2024 | |
| Rebecca Rudge | Family | 1 st April 2024 | |
| Vacancy | Family | | |
| Matt Roddison | Staff | 1 st April 2024 | |

Link Trustees & Governors

Safeguarding Links

| | Name | Position |
|---|-------------------|------------------------------|
| Shireland Collegiate Academy Trust | Andy Dennis | Chair of Trust Board |
| Shireland Collegiate Academy | Muneerah Dubidat | Governor of SPC |
| Thorns Collegiate Academy | Martin O'Hanlon | Chair of TCA's SPC |
| West Bromwich Collegiate Academy | Haleema Yousaf | Governor of SPC |
| Shireland Biomedical UTC | Stephen McMullan | Governor of SPC |
| Shireland CBSO Academy | Tom Spurgin | Chair of SCBSO's SPC |
| Holyhead Primary Academy | Laura Bracey | Governor of SPC |
| Tameside Primary Academy | Judith Hunt | Trustee & Chair of TPA's SPC |
| Shireland Technology Primary | Katie Lucas | Governor of SPC |
| Wallbrook Primary Academy | Len Hazlehurst | Governor of SPC |
| Lightwoods Primary Academy | Elizabeth Warwick | Governor of SPC |
| Newfield Park Primary Academy | | |

SEND Links

| | Name | Position |
|---|-------------------|------------------------------|
| Shireland Collegiate Academy Trust | Judith Hunt | Trustee & Chair of TPA's SPC |
| Shireland Collegiate Academy | Gareth Brown | Governor of SPC |
| Thorns Collegiate Academy | Sadia Riaz | Governor of SPC |
| West Bromwich Collegiate Academy | Elizabeth Johnson | Chair of WBCA's SPC |
| Shireland Biomedical UTC | Donna Lewis | Governor of SPC |
| Shireland CBSO Academy | Carla Amos | Governor of SPC |
| Holyhead Primary Academy | James Hendy | Governor of SPC |
| Tameside Primary Academy | Judith Hunt | Trustee & Chair of TPA's SPC |
| Shireland Technology Primary | Marie Hartland | Governor of SPC |
| Wallbrook Primary Academy | Stella Fox | Chair of WPA's SPC |
| Lightwoods Primary Academy | Rajeev Bahl | Governor of SPC |
| Newfield Park Primary Academy | | |

Teaching & Learning Links

| | Name | Position |
|------------------------------------|------------------|-----------------|
| Shireland Collegiate Academy Trust | Julie McLeod | Trustee |
| Shireland Collegiate Academy | Taher Mulla | Governor of SPC |
| Thorns Collegiate Academy | Tom Pell | Governor of SPC |
| West Bromwich Collegiate Academy | Sohail Hussain | Governor of SPC |
| Shireland Biomedical UTC | Liam McGrath | Governor of SPC |
| Shireland CBSO Academy | Amrit Sohal | Governor of SPC |
| Holyhead Primary Academy | Alison Barlow | Governor of SPC |
| Tameside Primary Academy | Gary Smith | Governor of SPC |
| Shireland Technology Primary | Samreena Kamran | Governor of SPC |
| Wallbrook Primary Academy | Charlotte Taylor | Governor of SPC |
| Lightwoods Primary Academy | Amy Danks | Governor of SPC |
| Newfield Park Primary Academy | | |

Wellbeing Links

| | Name | Position |
|------------------------------------|----------------|----------------------|
| Shireland Collegiate Academy Trust | Andy Dennis | Chair of Trust Board |
| Shireland Collegiate Academy | Zahur Akhtar | Governor of SPC |
| Thorns Collegiate Academy | Chris Williams | Governor of SPC |
| West Bromwich Collegiate Academy | Abayomi Bogle | Governor of SPC |
| Shireland Biomedical UTC | Monique Hyllam | Governor of SPC |
| Shireland CBSO Academy | Sarah Knott | Governor of SPC |
| Holyhead Primary Academy | Laura Bracey | Governor of SPC |
| Tameside Primary Academy | Amie Chatwin | Governor of SPC |
| Shireland Technology Primary | Marie Hartland | Governor of SPC |
| Wallbrook Primary Academy | | |
| Lightwoods Primary Academy | Kerry Forward | Governor of SPC |
| Newfield Park Primary Academy | | |

Declarations of Pecuniary Interests

| Name | Direct Interest | Indirect Interest | Educational/Charitable Interest | Material Interest | Employment Interests |
|---|---|---|---|--|----------------------|
| Shireland Collegiate Academy Trust – Executive Leadership Team | | | | | |
| Melanie Adams | None | None | None | Jennifer Adams, Daughter (WBCA'S Career Lead) employed since Jan 2017 | None |
| Aled Ballard | None | APB Machinery- Father in-law runs the business since Feb 2016 | None | None | None |
| George Faux | Director of Shireland Learning Ltd since 1/9/2019 | None | None | None | None |
| Moira Green | None | None | None | David Green, Cousin (SCBSO Principal) employed since September 2023 | None |
| Kris Griffin | None | None | None | None | None |
| Lady Kirsty Grundy | None | None | Educational advisor for Now Press Play Advisory Group | Sir Mark Grundy, Husband (CEO) | None |
| Sir Mark Grundy | None | None | None | Lady Kirsty Grundy (wife) Principal & Primary Lead | None |
| Dave Irish | None | None | None | None | None |
| Jane Kellas | None | None | None | None | None |
| Hasnain Panjwani | None | None | None | None | None |
| Jodie Taylor | None | None | None | Stephen Taylor (Husband) Lead Practitioner for Maths at Shireland Collegiate Academy | None |

| Name | Direct Interest | Indirect Interest | Educational/Charitable Interest | Material Interest | Employment Interests |
|--|---|--|--|---|---|
| | | | | Shelia Riley (Mother) Senior Academy Information Officer at Shireland Collegiate Academy. | |
| Shireland Collegiate Academy Trust – Trustees and Members | | | | | |
| Zahur Akhtar | None | None | None | None | None |
| Michael Conway-Jones | None | None | Vice Principal at Fircroft College since 2002 | None | Vice Principal at Fircroft College since 2002 |
| Andy Dennis | None | None | None | None | None |
| Rajikiran Egan | None | None | None | None | Forresters LLP. Employee at Forresters. Job title HR Administrator Employment start date 01.06.23 |
| Ian Foyle | None | None | Director of Shireland Learning Ltd – 1/7/20 | None | Director of Shireland Learning Ltd – 1/7/20 |
| Judith Hunt | None | None | Member of the 'Inner Wheel of Wednesbury Since Sept 2023 | None | None |
| Julie McLeod | None | None | Pro Vice Chancellor at Birmingham City University since 2022 | None | Pro Vice Chancellor at Birmingham City University since 2022 |
| Jithesh Nair | None | None | None | None | Director of Shireland Learning Ltd Since Jan 2017 |
| Balbir Sandhu | None | None | Employed at Holly Lodge School since January 2023 | None | Employed at Holly Lodge School since January 2023 |
| Ashley Savell-Boss | Director of Boss Funeral Holdings Ltd Director of Trinity Funeral Services Ltd | Ella Savell-Boss (Sister) Contract for Trust Safeguard Support Since Nov 19 | None | None | Ella Savell-Boss (Sister) Contract for Trust Safeguard Support Since Nov 19 |

| Name | Direct Interest | Indirect Interest | Educational/Charitable Interest | Material Interest | Employment Interests |
|---|---|-------------------|---|--|---|
| | Director of Asian Funeral Services Ltd Director of Brain & Waldron Ltd | | | | |
| Emma Stenning | CEO at City of Birmingham Symphony Orchestra (CBSO). CBSO has a partnership with SCBSO since Apr 2023. | None | None | None | None |
| Robert Till | None | None | None | None | None |
| Shireland Collegiate Academy Trust – Associate Governors | | | | | |
| Karen Kingham | None | None | None | None | Finance Director for Midlands Air Ambulance Charity since July 2019 |
| Shireland Collegiate Academy SPC | | | | | |
| Gareth Brown | None | None | Employee at Raglan Road Christian Church and Cinnamon Network since Apr 2017 Trustee at Smethwick Church Action Network since April 2023 | Amelia Brown (Parent) occasional employee since June 2020 | None |
| Zephaniah Chukdwudum | None | None | None | None | None |
| Muneerah Dubidat | None | None | None | None | None |
| Liam Fletcher | Karla Fletcher (Parent) works as Office Manager at STP since Sept 2019 | None | None | Karla Fletcher (Parent) works as Office Manager at STP since Sept 2019 | None |

| Name | Direct Interest | Indirect Interest | Educational/Charitable Interest | Material Interest | Employment Interests |
|---|---|-------------------|---|---|----------------------|
| | Alan Fletcher (Parent) works as S-CAT Estates Manager since Sept 2023 | | | Alan Fletcher (Parent) works as S-CAT Estates Manager since Sept 2023 | |
| Jessica Holloway-Dyker | None | None | WEA (Adult Education charity) Started working for WEA July 2021, appointed governor to Trust Sept 2023 | None | None |
| Taher Mulla | None | None | None | None | None |
| Lucy Prince | None | None | None | None | None |
| Emma Scott | None | None | None | None | None |
| Kelly Martin (Governance Professional) | None | None | None | Andrea Bell (Vice Principal at SCA) has been a friend since June 2014 | None |
| Thorns Collegiate Academy SPC | | | | | |
| Nicola Jones | None | None | Trustee at Elements Diocesan Learning Trust | None | None |
| Manny Kelay | None | None | None | None | None |
| Qahir Damani | None | None | None | None | None |
| Anthony Farrell | None | None | None | None | None |
| Martin O'Hanlon | None | None | None | None | None |
| Tom Pell | None | None | None | Amy Danks (Partner) Vice Principal of SCBSO since Aug 2023 | None |
| Shona Jenner-Whatford | None | None | None | None | None |
| Sadia Riaz | None | None | None | None | None |
| Matthew Snell | None | None | None | None | None |

| Name | Direct Interest | Indirect Interest | Educational/Charitable Interest | Material Interest | Employment Interests |
|---|-----------------|-------------------|---|-------------------|---|
| Chris Williams | None | None | None | None | None |
| Karina Bloomer (Governance Professional) | None | None | None | None | None |
| West Bromwich Collegiate Academy SPC | | | | | |
| Sandeep Basra | None | None | None | None | None |
| Abayomi Bogle | None | None | None | None | None |
| Claire Churchill | None | None | Employee at the University of Birmingham since January 2020 | None | Employee at the University of Birmingham since January 2020 |
| Henry Cofie-Squire | None | None | None | None | None |
| Sohail Hussain | None | None | None | None | None |
| Elisabeth Johnson | None | None | None | None | Administrator for LADO Service at Sandwell Children's Trust (November 2021) |
| Abdul Khan | None | None | Parent Governor at Lodge Primary School Employee at Sandwell MBC | None | None |
| Janine Parkes | None | None | None | None | None |
| Haleema Yousaf | None | None | None | None | None |
| Geraldine Patel | None | None | None | None | None |

| Name | Direct Interest | Indirect Interest | Educational/Charitable Interest | Material Interest | Employment Interests |
|--|-----------------|-------------------|---|---|---|
| (Governance Professional) | | | | | |
| Shireland Biomedical UTC SPC | | | | | |
| Andrea Stephens | None | None | None | None | None |
| Gill Aspley | None | None | None | Natasha Green (Daughter) Catering assistant at SBU Since Apr 2021 | None |
| Julie Hadley | None | None | 'Birmingham City University Employee (Deputy Head of Nursing and Midwifery) | None | 'Birmingham City University Employee (Deputy Head of Nursing and Midwifery) |
| Monique Hyllam | None | None | None | None | None |
| Donna Lewis | None | None | 'Birmingham City University Employee | None | 'Birmingham City University Employee |
| Liam McGrath | None | None | 'Birmingham City University Employee (Deputy Head of College, Education and Social Work) | None | 'Birmingham City University Employee (Deputy Head of College, Education and Social Work) |
| Stephen McMullan | None | None | None | None | None |
| Lorraine Newton | None | None | Employee at Great Bridge Primary School since 1998 | None | None |
| Siqua Rashid | None | None | None | None | Employee at Holyhead School (Since Jan 2022) |
| Sam Banks (Governance Professional) | None | None | None | Tiffany Smith (Nephew's partner) Receptionist at SBU | None |

| Name | Direct Interest | Indirect Interest | Educational/Charitable Interest | Material Interest | Employment Interests |
|---|-----------------|---|---|--|---|
| | | | | Since Sept 2023 | |
| Shireland CBSO Academy SPC | | | | | |
| David Green | None | None | None | Moira Green, Cousin (SCA Principal) employed since November 2023 | None |
| Carla Amos | None | None | None | None | None |
| Catherine Arlidge | None | None | Employee of the National Children's Orchestra of Great Britain (Since 2017) Founding Member of The Stringcredibles (Since 2013) | None | Employee of Birmingham Symphony Orchestra (Since 1990) |
| Indi Deol | None | None | None | None | None |
| Lisa Hill | None | None | None | None | None |
| Sarah Knott | None | None | None | None | None |
| Amrit Sohal | None | None | None | None | None |
| Tom Spurgin | None | City of Birmingham Symphony Orchestra. Director of Learning & Engagement & partnership lead at the CBSO with the Shireland CBSO Academy(Since Feb 2022) | City of Birmingham Symphony Orchestra. Director of Learning & Engagement & partnership lead at the CBSO with the Shireland CBSO Academy(Since Feb 2022) | None | City of Birmingham Symphony Orchestra. Director of Learning & Engagement & partnership lead at the CBSO with the Shireland CBSO Academy(Since Feb 2022) |
| Katie Thomas | None | None | Trustee for the charity Hey Wizard. | None | None |
| Parveen Chumber-Raju (Governance Professional) | None | None | None | None | None |
| Holyhead Primary Academy SPC | | | | | |
| Natalie Shipley | None | None | None | None | None |

| Name | Direct Interest | Indirect Interest | Educational/Charitable Interest | Material Interest | Employment Interests |
|--------------------------|---|-------------------|--|---|----------------------|
| Faye Adams | None | None | None | Child attends HPA's Nursery | None |
| Alison Barlow | None | None | Employed as Leader of Biology at Gospel Oak School at Central Academies Trust Employee since 2016 | None | None |
| Laura Bracey | None | None | None | None | None |
| Rebecca Burkitt | None | None | None | None | None |
| Kirsty Cole | None | None | None | Dad works at Old Park Primary School and works 1 day a week at HPA (Forest School) Since 2023 | None |
| James Hendy | None | None | None | None | None |
| Christopher Jones | None | None | Board Chair at 'Frank F Community Association since 2015 Ambassador Chair at Reedswood E-ACT Primary School since 2004 Group Chair at Birchills and Reedswood Agenda 21 since 1995 | Jennifer Jones (Daughter) is a HTLA at HPA since 2023 | None |
| Adam Orton | None | None | None | Ashleigh Orton (wife) is a Governor at HPA since 2021 | None |
| Ashleigh Orton | Funding Administrator at Elmhurst Ballet School since July 22 | None | Funding Administrator at Elmhurst Ballet School since July 22 | Husband Adam Orton – Chair of SPC at HPA | None |
| Arron Samra | None | None | None | None | None |

| Name | Direct Interest | Indirect Interest | Educational/Charitable Interest | Material Interest | Employment Interests |
|---|---|--|---------------------------------|---|----------------------|
| Lisa Smith (Governance Professional) | None | Melanie Melia (Sister) learning support at Holyhead Primary School | None | None | None |
| Tameside Primary Academy SPC | | | | | |
| Mitchell Hill | None | None | None | None | None |
| Amie Chatwin | None | None | None | None | None |
| Simeon Douglas | None | None | None | None | None |
| Emily Heeley | None | None | None | None | None |
| Satvinder Kaur | None | None | None | None | None |
| Harjeet Parwana | None | None | None | None | None |
| Gary Smith | None | None | None | None | None |
| Jayne Dean (Governance Professional) | None | None | None | None | None |
| Shireland Technology Primary SPC | | | | | |
| Andrea Bell | None | None | None | Kelly Martin (friend) Admin Officer at SCA employed since March 2017 Sarahn Deane (friend) Assistant Principal at SCA since Jan 2020 | None |
| Andrea Du Plooy | None | None | None | None | None |
| Liam Fletcher | Karla Fletcher (Parent) works as Office Manager at STP since Sept 2019 Alan Fletcher (Parent) works as S-CAT Estates Manager since Sept 2023 | None | None | Karla Fletcher (Parent) works as Office Manager at STP since Sept 2019 Alan Fletcher (Parent) works as S-CAT Estates Manager since Sept 2023 | None |

| Name | Direct Interest | Indirect Interest | Educational/Charitable Interest | Material Interest | Employment Interests |
|---|-----------------|-------------------|---|---|---|
| Marie Hartland | None | None | Chair of PTA Group at STP | None | None |
| Samreena Kamran | None | None | None | None | None |
| Katie Lucas | None | None | Learning & Participation Manager for the City of Birmingham Symphony Orchestra (CBSO) | None | None |
| Vinod Mallampati | None | None | None | None | None |
| Pavendeep Matharu | None | None | None | None | None |
| Gemma Willis (Governance Professional) | None | None | None | None | None |
| Karla Fletcher (Governance Professional) | None | None | None | Alan Fletcher (Husband) Estate's manager for the Trust Liam Fletcher (Son) assistant Vice Principal at Shireland Collegiate Academy Trust. | None |
| Wallbrook Primary Academy SPC | | | | | |
| Lorna McGregor | None | None | None | None | None |
| Stella Fox | None | None | None | None | Employee at Compass Group UK and Ireland (Catering Organisation) Since 05/03/07 |
| Len Hazlehurst | None | None | None | None | None |

| Name | Direct Interest | Indirect Interest | Educational/Charitable Interest | Material Interest | Employment Interests |
|--|-----------------|-------------------|---|--|----------------------|
| Charlotte Taylor | None | None | None | None | None |
| Matthew Hammond | None | None | None | A Stanley (Mother-in law) Cook at Wallbrook Primary School since May 2012 | None |
| Leigh New | None | None | None | None | None |
| Sana Rashid | None | None | None | None | None |
| Abdul Samee Wahidi | None | None | None | None | None |
| Catherine Philips (Governance Professional) | None | None | None | None | None |
| Lightwoods Primary Academy SPC | | | | | |
| Rob Matthews | None | None | Governor/Trustee at North Leamington Education since 2018 | None | None |
| Rajeev Bahl | None | None | None | None | None |
| Amy Danks | None | None | None | Tom Pell (Partner) Head of English at TCA Since September 2022 | None |
| Diana Dordea | None | None | None | None | None |
| Kerry Forward | None | None | None | None | None |
| Lisa Lines | None | None | None | None | None |
| Jennifer Okoeguale | None | None | None | None | None |
| Neil Robertson | None | None | None | None | None |
| Elizabeth Warwick | None | None | None | None | None |
| Michelle Tomkins | None | None | None | Chris Tomkins (Husband) | None |

| Name | Direct Interest | Indirect Interest | Educational/Charitable Interest | Material Interest | Employment Interests |
|---|-----------------|-------------------|--|---|----------------------|
| (Governance Professional) | | | | Site Manager at Lightwoods Primary Academy since 2014 | |
| Newfield Park Primary Academy | | | | | |
| Stephen Payne | None | None | None | None | None |
| Chris Christoforou | None | None | None | None | None |
| Matt Roddison | None | None | None | None | None |
| Rebecca Rudge | None | None | None | None | None |
| Kate Sharratt | None | None | None | None | None |
| John Stone | None | None | None | None | None |
| Kerry Morris (Governance Professional) | None | None | None | None | None |
| Other | | | | | |
| Emma Billingham (Governance support Officer) | None | None | Co-opted Governor at Reddal Hill Primary School since Feb 2024 | None | None |
| Joanne Cook (Trust Governance Professional) | None | None | None | None | None |

Gift and Hospitality Declarations

| Name | Autumn Term | Spring Term | Summer Term |
|---|-------------|-------------|-------------|
| Shireland Collegiate Academy Trust – Executive Leadership Team | | | |
| Melanie Adams | None | None | |
| Aled Ballard | None | None | |
| George Faux | None | None | |
| Moira Green | None | None | |
| Kris Griffin | None | None | |
| Lady Kirsty Grundy | None | None | |
| Sir Mark Grundy | None | | |
| Dave Irish | None | N/A | N/A |
| Jane Kellas | None | | |
| Hasnain Panjwani | None | | |
| Jodie Taylor | None | None | |
| Shireland Collegiate Academy Trust – Members and Trustees | | | |
| Zahur Akhtar | None | | |
| Michael Conway-Jones | None | None | |
| Andy Dennis | None | None | |
| Kiran Egan | None | None | |
| Ian Foyle | None | None | |
| Judith Hunt | None | | |
| Julie McLeod | None | | |
| Jithesh Nair | None | None | |
| Balbir Sandhu | None | None | |
| Ashley Savell-Boss | None | None | |
| Emma Stenning | None | | |
| Robert Till | None | | |
| Shireland Collegiate Academy Trust – Associate Governors | | | |
| Karen Kingham | N/A | | |
| Shireland Collegiate Academy SPC | | | |
| Gareth Brown | | None | |
| Zephaniah Chukwudum | None | N/A | N/A |
| Muneerah Dubidat | None | None | |

| Name | Autumn Term | Spring Term | Summer Term |
|---|-------------|-------------|-------------|
| Liam Fletcher | None | N/A | N/A |
| Jessica Holloway-Dyker | None | None | |
| Taher Mulla | None | None | |
| Lucy Prince | N/A | None | |
| Emma Scott | None | | |
| Kelly Martin | None | | |
| Thorns Collegiate Academy SPC | | | |
| Nicola Jones | None | None | |
| Manny Kelay | None | N/A | N/A |
| Qahir Damani | None | None | |
| Anthony Farrell | None | | |
| Shona Jenner-Whatford | None | N/A | N/A |
| Martin O'Hanlon | None | | |
| Tom Pell | None | None | |
| Sadia Riaz | None | | |
| Matthew Snell | None | None | |
| Chris Williams | None | None | |
| Karina Bloomer | None | None | |
| West Bromwich Collegiate Academy SPC | | | |
| Sandeep Kaur Basra | None | N/A | N/A |
| Abayomi Bogle | None | | |
| Claire Churchill | None | None | |
| Henry Cofie-Squire | None | | |
| Sohail Hussain | None | | |
| Elisabeth Johnson | None | | |
| Abdul Khan | | None | |
| Janine Parkes | None | None | |
| Haleema Yousaf | None | | |
| Geraldine Patel | None | None | |
| Shireland Biomedical UTC SPC | | | |
| Andrea Stephens | None | None | |
| Gill Aspley | N/A | | |
| Julie Hadley | None | None | |

| Name | Autumn Term | Spring Term | Summer Term |
|-------------------------------------|--|-------------|-------------|
| Monique Hyllam | None | | |
| Donna Lewis | None | | |
| Liam McGrath | None | | |
| Stephen McMullan | None | | |
| Lorraine Newton | N/A | None | |
| Siqua Rashid | None | None | |
| Sam Banks | None | None | |
| Shireland CBSO Academy | | | |
| David Green | <u>Personally received:</u> Tickets from CBSO to attend the family concert £48 (4 x £12) | | |
| Carla Amos | None | | |
| Catherine Arlidge | None | None | |
| Indi Deol | None | None | |
| Lisa Hill | None | None | |
| Sarah Knott | None | None | |
| Amrit Sohal | None | | |
| Tom Spurgin | None | | |
| Katie Thomas | None | | N/A |
| Parveen Chumber-Raju | None | None | |
| Holyhead Primary Academy SPC | | | |
| Natalie Shipley | None | None | |
| Faye Adams | None | | |
| Alison Barlow | None | | |
| Laura Bracey | | | |
| Rebecca Burkitt | None | | |
| Kirsty Cole | None | | |
| James Hendy | None | None | |
| Christopher Jones | None | | |
| Adam Orton | None | N/A | N/A |
| Ashleigh Orton | None | N/A | N/A |
| Arron Samra | None | None | |

| Name | Autumn Term | Spring Term | Summer Term |
|---|-------------|-------------|-------------|
| Lisa Smith | None | None | |
| Tameside Primary Academy SPC | | | |
| Mitchell Hill | None | None | |
| Amie Chatwin | None | | |
| Simeon Douglas | | | N/A |
| Emily Heeley | None | | |
| Satvinder Kaur | None | N/A | N/A |
| Harjeet Parwana | None | None | |
| Gary Smith | None | | |
| Jayne Dean | None | None | |
| Shireland Technology Primary SPC | | | |
| Andrea Bell | None | None | |
| Andrea Du Plooy | None | | |
| Liam Fletcher | N/A | None | |
| Marie Hartland | None | | |
| Samreena Kamran | None | | |
| Katie Lucas | None | None | |
| Vinod Mallampati | None | | |
| Pavandeep Matharu | None | | |
| Gemma Willis | None | N/A | N/A |
| Karla Fletcher | None | | |
| Wallbrook Primary Academy SPC | | | |
| Lorna McGregor | None | None | |
| Stella Fox | None | | |
| Matthew Hammond | | | |
| Len Hazlehurst | None | | |
| Leigh New | | | |
| Sana Rashid | None | | |
| Charlotte Taylor | None | | |
| Abdul Samee Wahidi | None | | |
| Catherine Philips | None | None | |
| Lightwoods Primary Academy SPC | | | |
| Rob Matthews | None | None | |

| Name | Autumn Term | Spring Term | Summer Term |
|--------------------------------------|---|-------------|-------------|
| Rajeev Bahl | None | None | |
| Amy Danks | None | None | |
| Diana Dordea | N/A | | |
| Kerry Forward | None | | |
| Lisa Lines | None | | |
| Jennifer Okoeguale | None | | |
| Neil Robertson | None | None | |
| Elizabeth Warwick | None | | |
| Michelle Tomkins | None | None | |
| Newfield Park Primary Academy | | | |
| Stephen Payne | N/A | N/A | |
| Chris Christoforou | N/A | N/A | |
| Matt Roddison | N/A | N/A | |
| Rebecca Rudge | N/A | N/A | |
| Kate Sharratt | N/A | N/A | |
| John Stone | N/A | N/A | |
| Kerry Morris | N/A | N/A | |
| Other | | | |
| Emma Billingham | <u>Personally received:</u> Tickets & buffet from Birmingham Hippodrome to attend a HEN Network event £45 | None | |
| Joanne Cook | None | None | |

Meeting Attendance

| Trust Board  | | | | |
|---|-------------------------------|--------------------------------|-----------------------------|----------------------------|
| | 12 th October 2023 | 14 th December 2023 | 21 st March 2024 | 11 th July 2024 |
| Andy Dennis | Yes* | Yes* | No | |
| Sir Mark Grundy | Yes* | Yes* | Yes* | |
| Michael Conway-Jones | Yes* | Yes* | Yes* | |
| Judith Hunt | Yes* | Yes* | Yes* | |
| Julie McLeod | Yes* | Yes* | No | |
| Jithesh Nair | Yes* | Yes* | Yes* | |
| Emma Stenning | Yes* | Yes* | Yes* | |
| Robert Till | Yes* | Yes* | Yes* | |
| Mrs Jane Kellas (Company Secretary) | No | No | No | |
| Mrs Jo Cook (Clerk) | Yes* | Yes* | Yes* | |

* joined the meeting by conference call.

| Remuneration and Performance Management Committee  | | |
|---|---------------------------------|----------------------------|
| | 28 th September 2023 | 20 th June 2024 |
| Andy Dennis | No | |
| Sir Mark Grundy | Yes* | |
| Michael Conway-Jones | No | |
| Judith Hunt | Yes* | |
| Julie McLeod | Yes* | |
| Jithesh Nair | No | |
| Emma Stenning | No | |
| Robert Till | Yes* | |
| Mrs Jo Cook (Clerk) | Yes* | |

* joined the meeting by conference call

| Resources Committee  | | | |
|---|-------------------------------|-----------------------------|----------------------------|
| | 24 th January 2024 | 24 th April 2024 | 27 th June 2024 |
| Jithesh Nair | Yes* | | |
| Sir Mark Grundy | No | | |
| Michael Conway-Jones | Yes* | | |
| Andy Dennis | Yes* | | |
| Stella Fox | No | | |
| Judith Hunt | Yes* | | |
| Karen Kingham | N/A Appointed 05/02/24 | | |
| Martin O'Hanlon | Yes* | | |
| Jo Cook (Clerk) | Yes* | | |

* joined the meeting by conference call.

| Audit and Risk Committee  | | | |
|--|-------------------------------|-----------------------------|----------------------------|
| | 7 th December 2022 | 14 th March 2024 | 21 st June 2023 |
| Judith Hunt | Yes* | Yes* | |
| Michael Conway-Jones | Yes* | Yes* | |
| Liam McGrath | N/A | Yes* | |
| Julie McLeod | Yes* | Yes* | |
| Jithesh Nair | Yes* | Yes* | |
| Jane Kellas (Company Secretary) | No | No | |
| Jo Cook (Clerk) | Yes* | Yes* | |

* joined the meeting by conference call.

| Shireland Collegiate Academy SPC  | | | |
|--|--------------------------------|-----------------------------|----------------------------|
| | 28 th November 2023 | 12 th March 2024 | 18 th June 2024 |
| Moira Green | Yes | Yes | |
| Michael Conway Jones | Yes | Yes | |
| Zahur Akhtar | No | No | |
| Gareth Brown | Yes | Yes | |
| Zephaniah Chukwudum | N/A Resigned 29/09/23 | N/A | N/A |
| Muneerah Dubidat | Yes | Yes | |
| Liam Fletcher | Yes | N/A Resigned 29/11/23 | N/A |
| Jessica Holloway-Dyker | Yes | No | |
| Taher Mulla | No | No | |
| Lucy Prince | N/A Appointed 09/02/24 | Yes | |
| Emma Scott | Yes | Yes | |
| Kelly Martin (Clerk) | Yes | Yes | |

* joined the meeting by conference call

| Thorns Collegiate Academy SPC  | | | |
|---|--------------------------------|-----------------------------|----------------------------|
| | 13 th November 2023 | 18 th March 2024 | 18 th June 2024 |
| Nikki Jones | N/A | Yes* | |
| Manny Kelay | Yes* | N/A | N/A |
| Martin O'Hanlon | Yes* | Yes* | |
| Qahir Damani | Yes* | Yes* | |
| Anthony Farrell | N/A Appointed 13/11/23 | Yes* | |
| Shona Jenner-Whatford | No | N/A Resigned 21/12/23 | N/A |
| Tom Pell | Yes* | Yes* | |
| Sadia Riaz | Yes* | Yes* | |
| Matthew Snell | Yes* | No | |
| Chris Williams | No | No | |
| Karina Turner (Clerk) | Yes* | No | |

* joined the meeting by conference call

West Bromwich Collegiate Academy SPC



| | 15 th November 2023 | 6 th March 2024 | 10 th July 2024 |
|----------------------------|--------------------------------|----------------------------|----------------------------|
| George Faux | Yes | Yes | |
| Elizabeth Johnson | Yes | Yes | |
| Sandeep Kaur Basra | N/A Resigned 21/11/23 | N/A | N/A |
| Abayomi Bogle | Yes | Yes | |
| Claire Churchill | No | No | |
| Henry Cofie-Squire | Yes | Yes | |
| Sohail Hussain | Yes | Yes | |
| Abdul Khan | N/A Appointed 20/12/23 | No | |
| Janine Parkes | Yes | No | |
| Haleema Yousaf | Yes | No | |
| Geraldine Patel (Clerk) | No | Yes | |

* joined the meeting by conference call

Shireland Biomedical UTC SPC




| | 5 th December 2023 | 7 th March 2024 | 15 th July 2024 |
|-------------------|-------------------------------|----------------------------|----------------------------|
| Robert Till | Yes* | Yes | |
| Gill Aspley | N/A Appointed 05/02/24 | Yes | |
| Julie Hadley | No | Yes | |
| Monique Hyllam | Yes* | Yes | |
| Donna Lewis | Yes* | Yes | |
| Liam McGrath | Yes* | No | |
| Stephen McMullan | Yes* | Yes | |
| Lorraine Newton | N/A Appointed 04/03/24 | Yes | |
| Siqua Rashid | Yes* | No | |
| Sam Banks (Clerk) | Yes* | Yes | |

* joined the meeting by conference call



| | 5 th December 2023 | 13 th March 2024 | 26 th June 2024 |
|------------------------------|-------------------------------|-----------------------------|----------------------------|
| David Green | Yes | Yes | |
| Tom Spurgin | Yes | Yes | |
| Carla Amos | Yes | Yes | |
| Catherine Arlidge | Yes | Yes* | |
| Indi Deol | Yes | No | |
| Lisa Hill | No | No | |
| Sarah Knott | Yes | Yes | |
| Amrit Sohal | Yes | No | |
| Katie Thomas | No | No | N/A Resigned 07/04/24 |
| Parveen Chumber-Raju (Clerk) | Yes | No | |

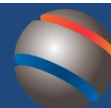
| Holyhead Primary Academy SPC  | | | |
|--|--------------------------------|-------------------------------|----------------------------|
| | 13 th November 2023 | 5 th February 2024 | 10 th June 2024 |
| Natalie Shipley | Yes* | Yes* | |
| Christopher Jones | Yes* | Yes* | |
| Adam Orton | N/A Resigned 03/09/23 | N/A | N/A |
| Faye Adams | No | Yes* | |
| Alison Barlow | Yes* | Yes* | |
| Laura Bracey | Yes* | | |
| Rebecca Burkitt | No | Yes* | |
| Kirsty Cole | Yes* | Yes* | |
| James Hendy | Yes* | Yes* | |
| Ashleigh Orton | N/A Resigned 03/09/23 | N/A | N/A |
| Arron Samra | Yes* | No | |
| Lisa Smith (Clerk) | Yes* | Yes* | |

* joined the meeting by conference call

| Tameside Primary Academy SPC  | | | |
|--|-------------------------------|-------------------------------|---------------------------|
| | 9 th November 2023 | 31 st January 2024 | 5 th June 2024 |
| Mitchell Hill | Yes* | Yes* | |
| Judith Hunt | Yes* | Yes* | |
| Amie Chatwin | Yes* | No | |
| Simeon Douglas | No | No | N/A Resigned 19/02/24 |
| Emily Heeley | No | No | |
| Satvinder Kaur | N/A Resigned 24/10/23 | N/A | N/A |
| Harjeet Parwana | No | Yes* | |
| Gary Smith | Yes* | Yes* | |
| Jayne Dean (Clerk) | Yes* | No | |

* joined the meeting by conference call

Shireland Technology Primary SPC



| | 8 th November 2023 | 30 th January 2024 | 6 th June 2024 |
|------------------------|-------------------------------|-------------------------------|---------------------------|
| Kirsty Grundy | Yes* | Yes* | |
| Jitesh Nair | Yes* | Yes* | |
| Andrea Bell | Yes* | No | N/A Resigned 21/03/24 |
| Andrea DuPlooy | Yes* | Yes* | |
| Liam Fletcher | N/A | N/A Appointed 22/03/24 | |
| Marie Hartland | Yes* | Yes* | |
| Samreena Kamran | Yes* | Yes* | |
| Katie Lucas | Yes* | Yes* | |
| Vinod Mallampati | Yes* | Yes* | |
| Pavandeep Matharu | Yes* | Yes* | |
| Gemma Willis(Clerk) | No | N/A | N/A |
| Karla Fletcher (Clerk) | N/A | No | |

* joined the meeting by conference call

Wallbrook Primary Academy SPC




| | 16 th November 2023 | 8 th February 2024 | 13 th June 2024 |
|---------------------------|--------------------------------|-------------------------------|----------------------------|
| Lorna McGregor | Yes* | Yes* | |
| Stella Fox | Yes* | Yes* | |
| Len Hazlehurst | Yes* | Yes* | |
| Matthew Hammond | Yes* | No | |
| Leigh New | Yes* | Yes* | |
| Sana Rashid | Yes* | Yes* | |
| Charlotte Taylor | Yes* | Yes* | |
| Abdul Samee Wahidi | Yes* | No | |
| Catherine Philips (Clerk) | Yes* | Yes* | |

* joined the meeting by conference call

| Lightwoods Primary Academy SPC  | | | |
|--|--------------------------------|-------------------------------|----------------------------|
| | 14 th November 2023 | 6 th February 2024 | 11 th June 2024 |
| Robert Matthews | Yes | Yes | |
| Elizabeth Warwick | Yes | Yes | |
| Rajeev Bahl | No | Yes | |
| Amy Danks | Yes | Yes | |
| Diana Dordea | N/A | N/A Appointed 22/03/24 | |
| Kerry Forward | Yes | Yes | |
| Lisa Lines | Yes | No | |
| Jennifer Okoeguale | No | No | |
| Neil Robertson | Yes | Yes | |
| Michelle Tomkins (Clerk) | Yes | Yes | |

* *joined the meeting by conference call*

| Newfield Park Primary Academy SPC  | |
|---|-----|
| | TBC |
| Stephen Payne | |
| John Stone | |
| Chris Christoforou | |
| Matt Roddison | |
| Rebecca Rudge | |
| Kate Sharratt | |
| Kerry Morris (Clerk) | |

* *joined the meeting by conference call*

Shireland Learning Limited (SLL)

Introduction

Shireland Learning Limited (SLL) is a wholly owned trading subsidiary of The Collegiate Academy Trust (CAT) and is compliant with the regulations set by the Academy Trust. The Governance of SLL is combined in the CAT governance structure but also has its own Board.

Register of People with Significant Control

In accordance with Government legislation, we are required to declare a register of people with significant control to Companies House annually or upon any alterations. The register below shows all of the information that is required to be publicised. According to the guidance, *'A company is required to take reasonable steps to contact its PSCs and confirm the information for the register. If someone refuses to provide the information they will commit a criminal offence. A company may also approach people who it believes have knowledge of who its PSCs are. Failure to comply is also a criminal offence.'*

Shireland Learning Ltd is a wholly owned subsidiary company of The Collegiate Academy Trust (06336693).

The Collegiate Academy Trust is:

- Incorporated in England and Wales
- Service address: The Collegiate Academy Trust Waterloo Road Smethwick West Midlands B66 4ND
- Holds directly or indirectly 75% or more of the voting rights in the company (Shireland Learning Ltd).
- No application has been made for information to be protected from public disclosure.

Shireland Learning Limited Board

Purpose

The Board of Directors will be responsible for the strategic direction and financial control of the company. Day to day management is the responsibility of the Chief Executive who will perform such duties as may be delegated to him or her from time to time.

The Board will:

- Ensure that the annual accounts are produced in accordance with the requirements of the Companies Act 2006
- Comply with the financial regulations and the standing orders and policies of the Academy Trust; and such financial regulations as may be issued by the DfE and/or Education Funding Agency (EFA) to the Academy Trust from time to time
- Make all decisions regarding major issues such as the business plan and financial matters and agree a Scheme of Financial Delegation for operational management

Quorum

The quorum is any 3 eligible Directors.

Frequency of meetings and programme of work

The Board will meet as often as is necessary to fulfill its responsibilities and at least once each term.

Review date

The Board's meeting arrangements and duties will be reviewed annually.

Directors of Shireland Learning Limited

All Director appointments are approved by the SLL Board.

| Name | Role | Appointment Date | Resignation Date |
|------------------------|--|--------------------------------|---|
| Sir Mark Grundy | Director & Chief Operating Officer (COO) | 8 th December 2021 | |
| Jeyaraj Anandou | Director | 12 th January 2017 | Removed on 14 th December 2023 |
| George Faux | Director | 18 th July 2017 | |
| Ian Foyle | Director | 1 st July 2020 | |
| Jithesh Nair | Director | 10 th January 2017 | |
| Emma Stenning | Director | 14 th December 2023 | |

Declarations of Pecuniary Interests

| Name | Direct Interest | Indirect Interest | Educational/Charitable Interest | Material Interest | Employment Interests |
|--|---|-------------------|--|---|--------------------------------------|
| Shireland Collegiate Academy Trust – Trustees and Members | | | | | |
| Sir Mark Grundy | None | None | None | Lady Kirsty Grundy (wife) Principal & Primary Lead at S-CAT | None |
| Jeyaraj Anandou | None | None | Elected representative for Sandwell council since May 2021. Trustee at Oaktree community centre since Feb 2022. | None | Employee at Deutsche Bank since 2010 |
| George Faux | None | None | None | None | None |
| Ian Foyle | None | None | None | None | None |
| Jithesh Nair | None | None | None | None | None |
| Emma Stenning | CEO at City of Birmingham Symphony Orchestra (CBSO). CBSO has a partnership with SCBSO since Apr 2023. | None | None | None | None |
| Other | | | | | |
| Jane Kellas (Company Secretary) | None | None | None | None | None |
| Joanne Cook (Governance Professional) | None | None | None | None | None |

Gifts and Hospitality Declarations

| Name | Autumn Term | Spring Term | Summer Term |
|--|-------------|-------------|-------------|
| Shireland Learning Limited – Directors | | | |
| Sir Mark Grundy | None | | |
| Jeyaraj Anandou | | N/A | N/A |
| George Faux | None | None | |
| Ian Foyle | None | None | |
| Jithesh Nair | None | None | |
| Emma Stenning | None | | |
| Other | | | |
| Jane Kellas (Company Secretary) | None | | |
| Joanne Cook (Governance Professional) | None | None | |

Meeting Attendance

| Shireland Learning Limited  | | | |
|--|--------------------------------|-------------------------------|----------------------------|
| | 27 th November 2023 | 22 nd April 2024 | 17 th June 2024 |
| Sir Mark Grundy | Yes* | | |
| Mr Jay Anandou | No | N/A Removed on 14/12/23 | N/A |
| Mr George Faux | Yes* | | |
| Mr Ian Foyle | Yes* | | |
| Mr Jithesh Nair | Yes* | | |
| Emma Stenning | N/A Appointed 14/12/23 | | |
| Mrs Jane Kellas (Company Secretary) | No | | |
| Mrs Jo Cook (Clerk) | Yes* | | |