



Upgrade of Heating Distribution at Holyhead Primary Academy, WS10 7PZ

School Location W3W;

///sharp.harp.boil

Any questions in relation to the request for tender can be submitted to the below;

Main Contact: **Mr Conor Adderley** cadderley@tpa.shirelandcat.net

Secondary Contact: **Mr Alan Fletcher** afletcher@shirelandcat.net

Bids to be submitted to; bids@shirelandcat.net

Any bids not received to the closed email inbox will not be accepted.

Closing date for quotes to be received by **12pm on the 20th September 2024.**

Site visits are encouraged prior to any submission of quotations, the site is available for visits the week commencing the 19th August 2024. To book a visit please email both contacts above.

Shireland Collegiate Academy Trust are seeking proposals and quotations for upgrade of existing heating distribution, located at



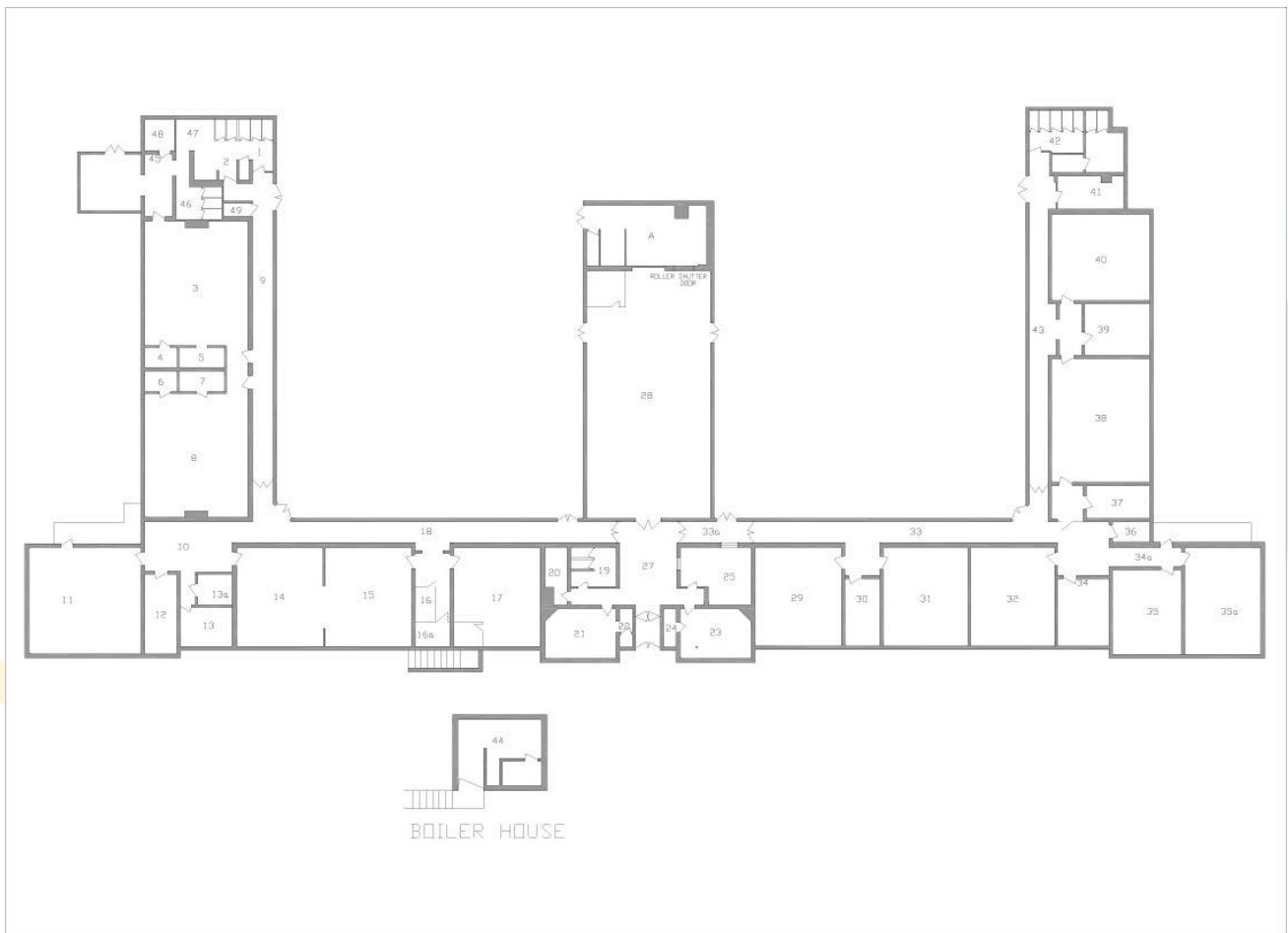
Holyhead Primary Academy,
Holyhead Road,
Wednesbury,
WS10 7PZ

We are looking for quotations based on the three options outlined below.

Overarching Criteria

- **The quote to clearly show breakdown between all the options and products listed therein**
- **At least 10 years Warranty**
- **Bidders must be certified installers.**

Floor plan of the academy (single story building)



Current Installation

- 25 cubic meter gas meter
- X2 Strebel Oil Firing Boilers
- 5000 Litres Oil Tank
- Basic Siemens control system
- Number of radiators - 66

Mandatory Inclusion

In addition to the scope of works and the three optional specifications set out below the upgrade of the BMS that can be remotely accessed must be an optional extra in all quotes.

Option 1 – Replacement with Gas Boilers

- Supply Install and commission new gas fired boilers.
- Decommission heating system and remove 2 No. oil boilers, flue systems and associated services
- Decommission and decontamination of old oil tank for environmental and fire hazard purposes.
- Install new stainless steel flue system
- Install new plate heat exchanger, heating pressurisation unit, expansion vessel
- Install CT twin head circulation pump set
- Install silver foil insulation lagging to new pipework.
- Cost to consider for per cast iron radiators to be replaced for LST alternative, as various sizes present throughout site – average per radiator with pipework modifications whilst system is drained for boiler install works

Option 2 – Replacement with Oil Boilers

- Supply Install and commission new oil-fired boilers
- Upgrade oil storage and supply to meet latest OFTEC regulations.
- Install new stainless steel flue system
- Install all new equipment necessary to the oil boilers

Option 3 – Air to Air Source Heating System

To perform comfort cooling in Summer and heat mode in Winter. Generally, all as illustrated on the schedule below.

Room Name	AC Unit Info	Room Dimensions
Principle Office	High Level Wall Mount	22m2
Safeguarding Office	High Level Wall Mount	7m2
Year 4 Classroom	Ceiling Concealed Cassette Unit	45m2
Music Room	Ceiling Concealed Cassette Unit	46m2
Library Area	Ceiling Mounted Fan Coil Unit	26m2
Year 6 Classroom	Ceiling Concealed Cassette Unit	66m2
Kitchen Storage Classroom	High Level Wall Mount	34m2
The Hub Classroom	Ceiling Concealed Cassette Unit	42m2
Hive Area	High Level Wall Mount	20m2
Business Manager Office	High Level Wall Mount	15m2
Year 5 Classroom	Ceiling Concealed Cassette Unit	46m2
Year 3 Classroom	Ceiling Concealed Cassette Unit	46m2
Reception Office	High Level Wall Mount	25m2
Nursery Classroom	Ceiling Concealed Cassette Unit	70m2
Nursery Conservatory Toilet	High Level Wall Mount	27m2
Medical Room	High Level Wall Mount	7m2

Kitchen Area	N/A	N/A
Hall Area	4 No. High Level Wall Mount	164m2
Ladies Toilet	Electric Heater BMS	10m2
Reception Area	Ceiling Concealed Cassette Unit	29m2
Staffroom/Meeting Room	High Level Wall Mount	20m2
Staffroom Area	Ceiling Concealed Cassette Unit	46m2
Foyer Area	High Level Wall Mount	13m2
Year 2 Classroom	Ceiling Concealed Cassette Unit	48m2
Year 2 breakout Area	Ceiling Concealed Cassette Unit	46m2
Children's Toilets A	Electric Heater BMS	13m2
Year 1 Classroom	Ceiling Concealed Cassette Unit	65m2
Year 1-2 Foyer Area	Ceiling Concealed Cassette Unit	24m2
Reception Classroom	Ceiling Concealed Cassette Unit	69m2
Corridor A	2No. High Level Wall Mount	35m2
Corridor B	2No. High Level Wall Mount	37.5m2
Corridor C	1No. High Level Wall Mount	9m2
IT Office	1No. High Level Wall Mount	6m2
Corridor Key Stage 1	3No. High Level Wall Mount	46m2
Corridor EYFS	2No. High Level Wall Mount	32m2
Staff Toilet EYFS	Electric Heater BMS	2.5m2
Kitchen Nursery	Electric Heater BMS	14m2
Disabled Toilet	Electric Heater BMS	2.5m2

Each room/unit shall have its own independent remote controller, offering on/off operational mode, temperature set point, fan speed and louvre adjustment etc, all units will be fitted with an interface PCB and will be wired back to a single master controller, enabling ultimate control of every air-con system from a single point.

The final position location of the master controller will be confirmed.

Each condensing unit shall be mounted externally and be securely fixed to either galvanised steel type cantilever wall brackets or suitable base footings. Condensate and drainage water to be routed to and terminated at suitable outdoor location, flat roof drainage point or waste water pipe.

Option 4 – Any other suitable solution which would be environmentally friendly

Other Points

- ✓ Handover new systems to customer personnel, demonstrating and training for use of plant
- ✓ O&M documentation upon handover of project
- ✓ All testing, commissioning and appropriate certification and reports to be produced
- ✓ Additional cost to consider for cast iron radiators to be replaced for LST alternative.

Submission Requirements

Interested contractors are required to submit the following documents:

- ✓ Company profile and relevant experience in similar roofing projects.
- ✓ Proposed methodology and timeline for completing the project.
- ✓ Breakdown of costs, including materials, labour, and any additional expenses.
- ✓ Certifications, licenses, and insurance coverage.
- ✓ References from previous clients.

Competition Evaluation

All tenders will be evaluated against the criteria set below and scored accordingly.

Assessment Criteria	% Weighting
Price	40%
Quality of Product	30%
Environmental impact	10%
Estimated time of delivery and completion of project	10%
Accuracy of quote against requested tender	10%

Disclaimer

This invitation to tender is in no way binding on Shireland Collegiate Academy Trust (SCAT). SCAT's contractual obligation will commence only upon signature of a written contract by the authorized signatories of SCAT and the successful tenderer. SCAT reserves the right to reject any tender and to cancel the process and reject all tenders at any time prior to the signing of the contract, without thereby incurring any liability to the affected tenderer(s). SCAT will not be responsible for, or pay for, expenses or losses that may be incurred by a candidate or tenderer in the preparation of its tender and/or in connection with the procurement process.